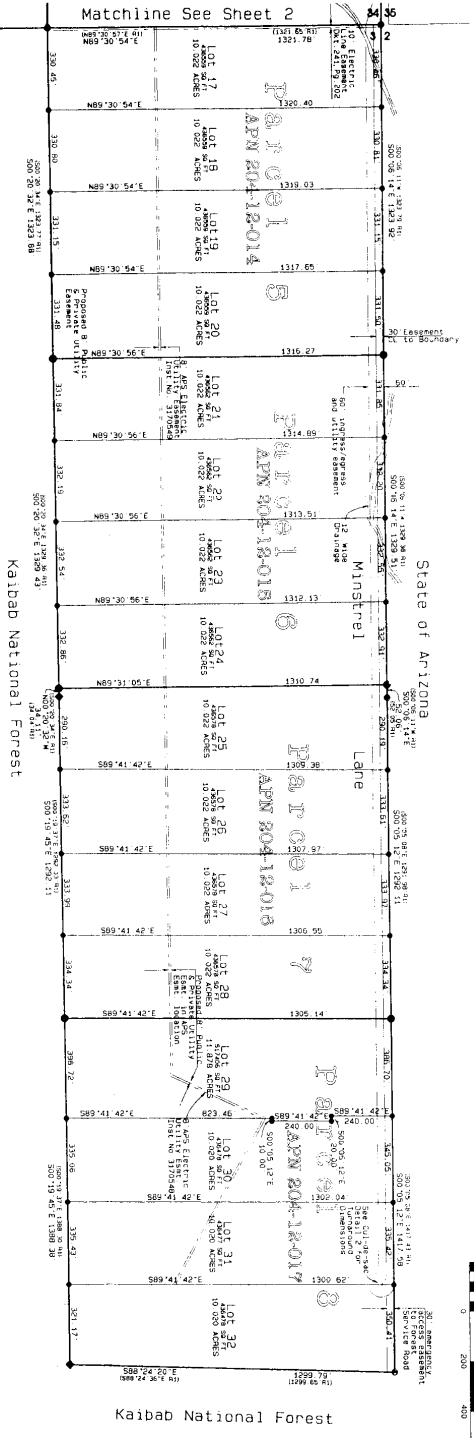


A portion of the SE 1/4 of Section 34, Township 22 North, Range 3 East and the E 1/2 of Section 3, Township 21 North, Range 3 East, Gila and Salt River Meridian, Coconino County, Arizona

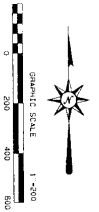
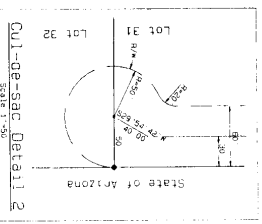
Final Plat Mountain Rose Ranch

Case 9 MAP 118



T22N R3E
T21N R3E

ALL ROADS AND STREETS ARE PRIVATELY OWNED AND ARE TO BE MAINTAINED BY THE PROPERTY OWNERS.
NO WATER SYSTEM IS PROVIDED FOR THIS SUBDIVISION AS OF THE DATE OF RECORDATION OF THIS PLAT.



Professional Engineer
State of Arizona
DATE: 5/27/03
DRAWN BY: [Name]
CHECKED BY: [Name]
APPROVED BY: [Name]



Professional Surveyor
State of Arizona
DATE: 5/27/03
DRAWN BY: [Name]
CHECKED BY: [Name]
APPROVED BY: [Name]

For Legend, Reference and Notes See Sheet 2.

Final Plat
Mountain Rose Ranch
Coconino County, Arizona